

Achievement in NCEA and UE: Al-Madinah School

Generated 9-Feb-2023

PR2 - Enrolment Based Cumulative Overall Results

Al-Madinah School

Academic Year	Year 11 NCEA L1	Year 12 NCEA L2	Year 13 NCEA L3	Year 13 UE
2018	93.1	96.3	100.0	76.2
2019	72.7	100.0	90.9	63.6
2020	100.0	92.3	100.0	100.0
2021	93.1	100.0	95.2	85.7
2022	87.1	88.9	100.0	92.6

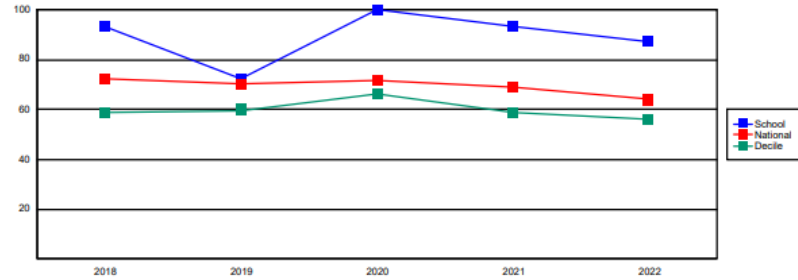
National

Year 11 NCEA L1	Year 12 NCEA L2	Year 13 NCEA L3	Year 13 UE
72.4	77.6	66.1	48.9
70.6	77.5	67.3	49.3
71.8	80.1	72.1	53.4
69.2	77.9	70.5	51.9
64.0	74.2	67.6	49.1

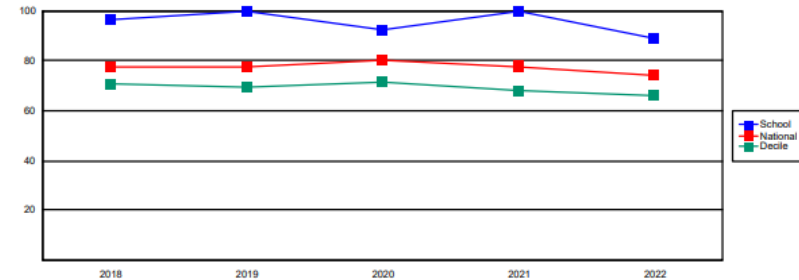
Decile 2

Year 11 NCEA L1	Year 12 NCEA L2	Year 13 NCEA L3	Year 13 UE
59.2	70.7	56.5	29.4
60.0	69.5	60.3	29.8
66.1	71.6	66.8	32.5
58.7	68.4	62.5	28.7
56.3	66.0	59.7	27.7

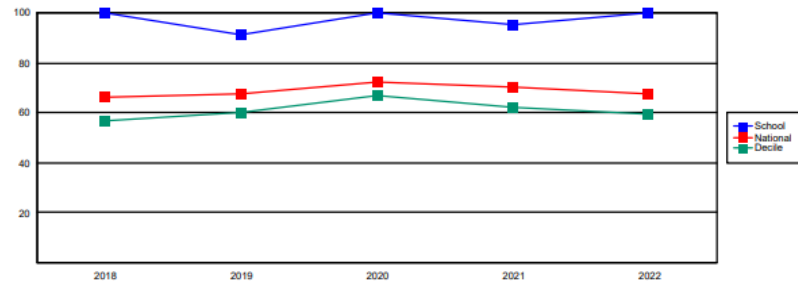
Year 11 - NCEA Level 1



Year 12 - NCEA Level 2



Year 13 - NCEA Level 3



Year 13 - University Entrance

